

2332623 Seal Kit 55 x 100 mm Hydraulic Seal Kit



Seal Kit equivalent to CATERPILLAR® Part Number 2332623

New OEM Aftermarket Seal Kit (Not branded CATERPILLAR®, direct replacement). This seal kit is a high-quality, direct replacement to original parts, at a fraction of the cost.

Description of CATERPILLAR® replacement Seal Kit 2332623

Used in the following applications:

BACKHOE LOADERS, 416D, STABILIZER, CYL #: 2283499,
 BACKHOE LOADERS, 416D, STABILIZER, CYL #: 2283500,
 BACKHOE LOADERS, 416D, STABILIZER, CYL #: 2627050,
 BACKHOE LOADERS, 416E, STABILIZER, CYL #: 2627049,
 BACKHOE LOADERS, 416E, STABILIZER, CYL #: 2627050,
 BACKHOE LOADERS, 420D, STABILIZER, CYL #: 2283499,
 BACKHOE LOADERS, 420D, STABILIZER, CYL #: 2283500,
 BACKHOE LOADERS, 420E, STABILIZER, CYL #: 2627049,
 BACKHOE LOADERS, 420E, STABILIZER, CYL #: 2627050,
 BACKHOE LOADERS, 430D, STABILIZER, CYL #: 2283499,
 BACKHOE LOADERS, 430D, STABILIZER, CYL #: 2283500,
 BACKHOE LOADERS, 430E, STABILIZER, CYL #: 2627049,
 BACKHOE LOADERS, 430E, STABILIZER, CYL #: 2627050,

*All manufacturer's names, part numbers, and descriptions are used for reference purposes only. We do not imply that any part shown is the product of these manufacturers. We also do not imply that the list price shown is exactly that of the manufacturer.

Kits Number	Rod x Bore	Kits Number	Rod x Bore	Kits Number	Ro
1052582	90*130	1373763	85*120	1697827	6
1052585	90*130	1373764	100*140	1697828	5
1052601	85*130	1373765	90*130	1697829	5
1057253	55*80	1373766	100*140	1697830	6
1057255	75*110	1373767	105*150	1697835	8

1057359	80*110	1373768	90*130	1697836	7
1057379	85*120	1438153	65*100	1697837	7
1057397	70*100	1475740	140*200	1697838	8
1113300	2.5" * 4.5"	1540728	85*120	1697839	6
1113302	2"*4"	1540735	100*140	1709827	7
1148290	80*120	1540744	85*120	1709929	7
1163529	150*220	1540748	90*130	1709937	7
1163612	105*150	1540757	90*130	1709941	6
1163649	110*170	1540761	100*140	1709946	8
1184024	100*140	1540766	105*150	1709999	8
1184131	85*120	1540773	90*130	1764912	8
1184175	90*130	1560625	130*180	1764913	10
1186023	85*120	1560626	140*200	1764914	9
1195435	75*110	1560627	150*220	1764935	6
1195446	80*120	1560656	110*160	1764999	9
1195457	65*100	1589093	100*140	1799625	8
1211405	70*100	1608564	30*60	1799634	8
1247005	85*160	1624675	80*110	1799638	7
1247009	80*110	1624676	85*120	1799772	9
1261887	90*130	1624677	70*100	1838911	8
1261937	85*120	1645174	100*140	1838930	8
1261947	85*120	1654342	50*90	1850223	8
1261979	130*190	1659416	130*190	1855574	9
1270630	100*140	1659418	85*120	1884219	10
1289277	105*150	1659419	95*130	1913170	11
1289278	110*170	1659420	80*110	1915619	10
1289280	110*160	1680758	140*150	1915649	11
1336646	80*110	1680759	110*160	1934321	5
1336823	100*140	1680760	110*160	1934322	5
1347123	85*125	1697826	75*110	1934323	4
Kits Number	Rod x Bore	Kits Number	Rod x Bore	Kits Number	Ro
1934324	50*100	2159984	95*130	2459842	10
1934325	50*80	2159985	100*140	2470257	9
1948235	110*160	2159986	90*130	2478790	8
1948363	100*140	2159988	110*160	2478792	10
1948366	105*150	2159989	110*160	2478868	8
1948396	110*160	2159990	110*170	2478878	10
1989433	55*100	2159995	140*200	2478888	8
1992402	55*100	2159996	130*180	2478974	10
1994727	100*140	2171007	105*180	2478995	8
1997416	105*150	2199066	55*95	2478996	8

1997417	110*170	2254625	110*160	2478998	8
1997425	85*130	2254646	130*190	2479000	8
1997426	90*130	2275347	2.5"*5"	2479001	8
2003242	55*100	2281792	3.25"*7"	2479004	9
2003315	105*150	2304001	110*180	2479005	8
2003361	75*130	2316844	115*170	2481165	10
2003495	140*200	2316845	115*170	2481168	10
2003496	150*220	2330761	95*130	2502475	10
2003498	130*190	2330763	100*170	2502485	10
2003572	110*160	2332622	50*100	2502486	9
2003621	130*190	2332623	55*100	2502487	8
2003621	130*190	2332628	1-7/8"* 3-1/4"	2519341	10
2042721	110*160	2339205	2"*4"	2519845	4
2043616	100*140	2342593	1-7/8"* 3-1/4"	2521191	9
2043625	85*120	2344442	110*170	2526101	9
2043626	100*140	2344488	95*135	2560319	7
2043627	85*120	2344566	100*140	2567093	10
2043628	85*125	2344576	105*150	2580313	8
2043630	90*130	2344587	95*135	2580500	8
2043692	85*120	2344674	110*160	2580500	8
2095874	100*140	2366368	85*120	2580501	8
2095959	95*130	2366389	85*120	2580503	8
2095963	80*110	2384462	2"*3"	2580504	8
2119614	90*130	2409538	2"*4"	2590625	9
2144502	100*140	2426840	105*150	2590626	9
Kits Number	Rod x Bore	Kits Number	Rod x Bore	Kits Number	Ro
2590627	90*130	2667806	85*120	2897885	9
2590628	90*130	2667812	95*130	2959894	11
2590630	95*130	2667861	80*110	2959895	13
2590631	100*140	2667874	85*120	2976850	5
2590632	100*140	2667891	85*120	3087824	10
2590633	100*140	2667892	85*120	3087830	11
2590634	100*140	2668011	85*120	3087841	6
2590635	100*140	2668012	100*140	3198295	11
2590636	105*150	2668013	95*135	3206346	6
2590637	105*150	2668014	90*130	3249485	10
2590648	100*140	2668015	100*140	3319328	13
2590650	105*150	2668016	105*150	3338675	11
2590656	95*135	2668045	95*135	3338750	11
2590665	95*135	2668057	85*120	3350007	8
2590678	90*130	2714484	40*65	3446336	9

2590695	85*120	2742460	110*160	3494119	7
2590699	100*140	2742461	130*190	3494120	8
2590706	85*120	2742462	110*170	3494121	7
2590712	90*130	2742511	85*120	3494122	8
2590719	90*130	2742515	100*140	3500962	8
2590725	100*140	2742526	90*130	3500967	8
2590729	105*150	2742649	95*130	3500970	10
2590743	105*150	2748318	70*130	3500971	10
2590751	110*160	2773395	55*95	3500973	10
2590756	110*160	2774140	50*85	3500974	10
2590768	115*170	2774167	45*75	3500975	10
2590774	95*135	2774178	50*85	3500976	9
2590775	100*140	2788641	45*80	3651283	2-
2590776	90*130	2790639	50*85	3747255	5
2590779	105*150	2797940	45*80	3764331	10
2605316	80*120	2812323	50*80	3764332	10
2605317	80*110	2835988	90*125	3764333	11
2605318	75*110	2836179	70*100	3764334	10
2605321	75*105	2897716	80*120	3764336	11
2605322	75*110	2897733	90*130	3769017	1-
Kits Number	Rod x Bore	Kits Number	Rod x Bore		
3779352	50*100	0875387	100*140		
3808347	85*140	0875407	130*180		
3812334	3-1/4"*6-1/4"	0875494	85*120		
3852908	80*110	0876654	110*160		
3852946	80*110	7I1360	90*130		
3904196	75*110	7Y4698	105*140		
3904227	70*100	7Y5145	85*130		
3937887	75*110	7Y5147	95*130		
3937949	80*120	191816K	2"*4"		
3944846	50*85	4I3665	85*120		
3944852	45*75	4I7664	65*100		
3949688	75*130	4I8913	75*110		
3975181	55*100	4I8914	65*100		
3979294	85*120	5I3047	80*120		
3981893	100*140	5I3047	80*120		
4195876	130*180	5I8893	150*220		
4560197	85*120	6C6091	95*160		
4560203	105*150	6I6858	70*100		
4560204	100*140	0875394	85*120		
4560207	85*120	0941910	100*140		

4562025	105*150			
---------	---------	--	--	--

Products Show



Hight Quality Seals



Replacement OEM Seals



Factory Direct Sales

Hydraulic Cylinder Seal Kit Components			
Items	Brand	Material	Color
Rod Seals	NOK/SKF/H605	Urethane (TPU)	Ivory/Blue/Gray
Buffer Seals	JSPSEAL	Urethane+PA or PTFE Bronze+NBR	Ivory/Purple
Wipers	JSPSEAL	Urethane+Metal or NBR+Metal	Ivory/Black
Piston Seals	JSPSEAL	PTFE Bronze+NBR+PA OR Nylon+NBR	Brown/Green/Gold
Wear Rings	JSPSEAL	Phenolic Resion Cotton Fabric or PTFE Bronze	Brown/Blue/Yellow
Backup Rings	JSPSEAL	PA or PTFE or PTFE Bronze	Black/White/Brown
O-Rings	JSPSEAL	NBR (Hardness 90 Shore A)	Black

Why choose JSPSEAL seal kit

- 1.Experience. We have been selling in the aftermarket for nearly 20 years, we know more about what kind of seal kits the machine needs under bad work conditions.
- 2.The accuracy of the dimensions.The same part number as the OEM, easy to query and purchase.
- 3.Price. We can beat all OEM parts in value, while as stated above the quality of the parts will remain the same.
- 4.Lead Times. JSPSEAL products have been exported for more than 10 years, and our extensive export experience can help you solve various transportation problems. We can ensure fast and

efficient lead times across all JSPSEAL Parts.

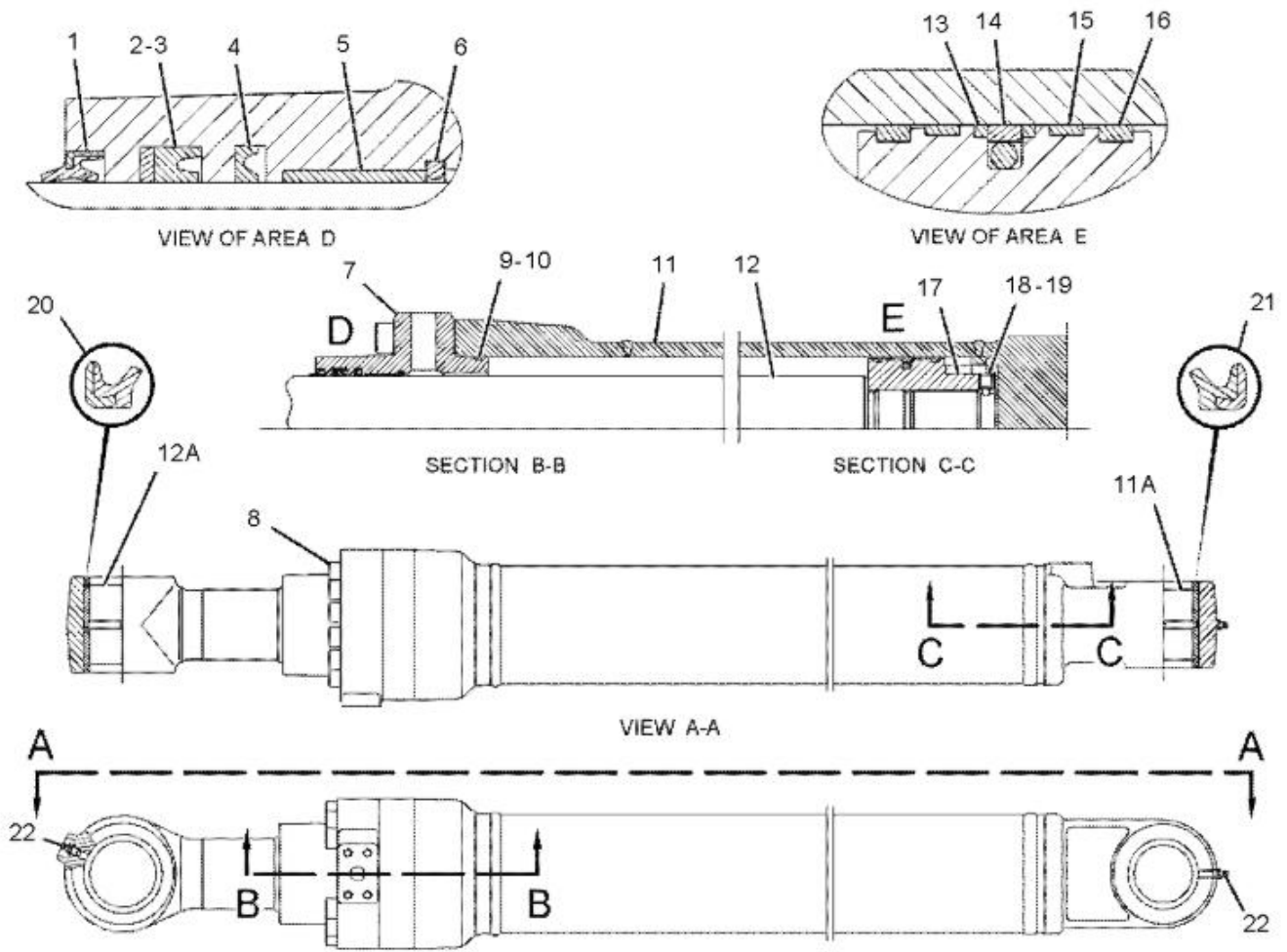
[More Seal Kits](#)



How to find seal kit part number ?

To find the exact part for your machine, the best way to do it is to find out the part number you need, and then search it in our search bar on our homepage, www.jspseal.com. This will show you the right part for what you need, and you can order quickly without fuss.

However, if you can't find the part you need please [contact us](#) and we will source it for you.



Our Services

Chat on line

Whatsapp/Wechat/Skype

OEM part number

We can help you find OEM part number

Shipment

Express/Air/Sea

[Not quite sure yet?](#)

[Why not visit our contact page, we would love to chat with you!](#)

-

Product link : <https://www.jspseal.com/2332623-seal-kit-55-x-100-mm-hydraulic-seal-kit.html>